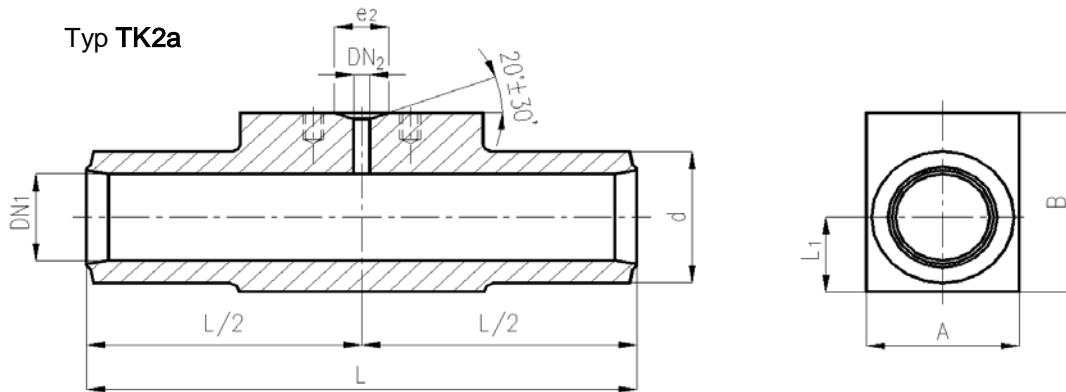
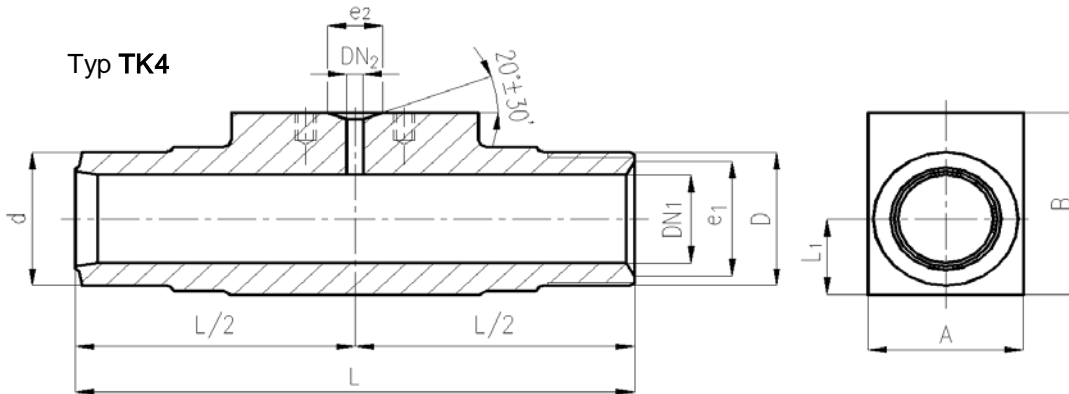


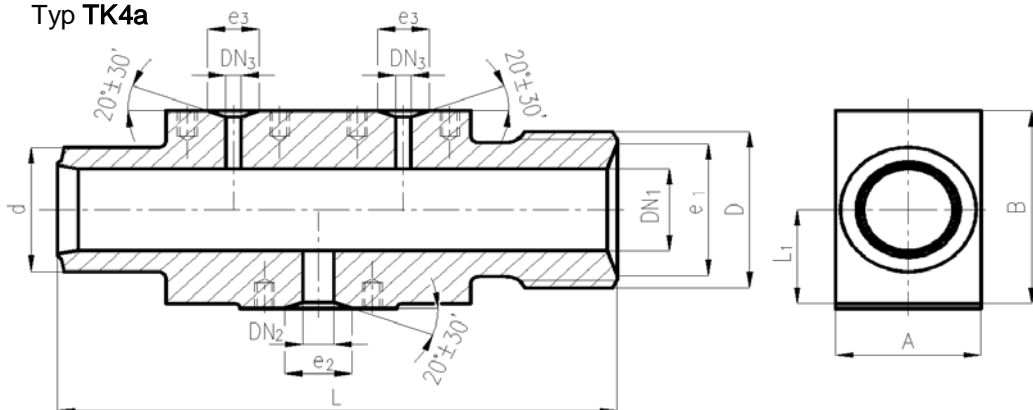
Typ TK2a



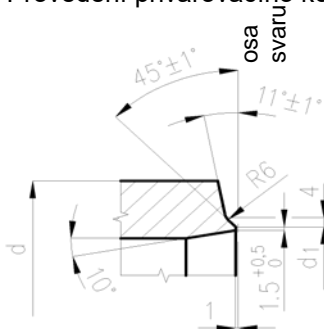
Typ TK4



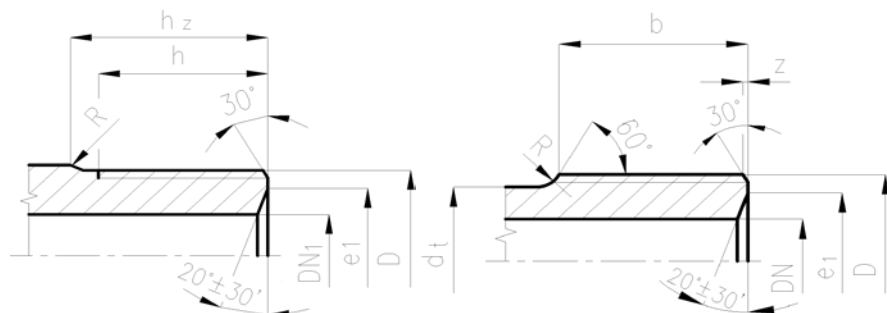
Typ TK4a



Provedení přivařovacího konce

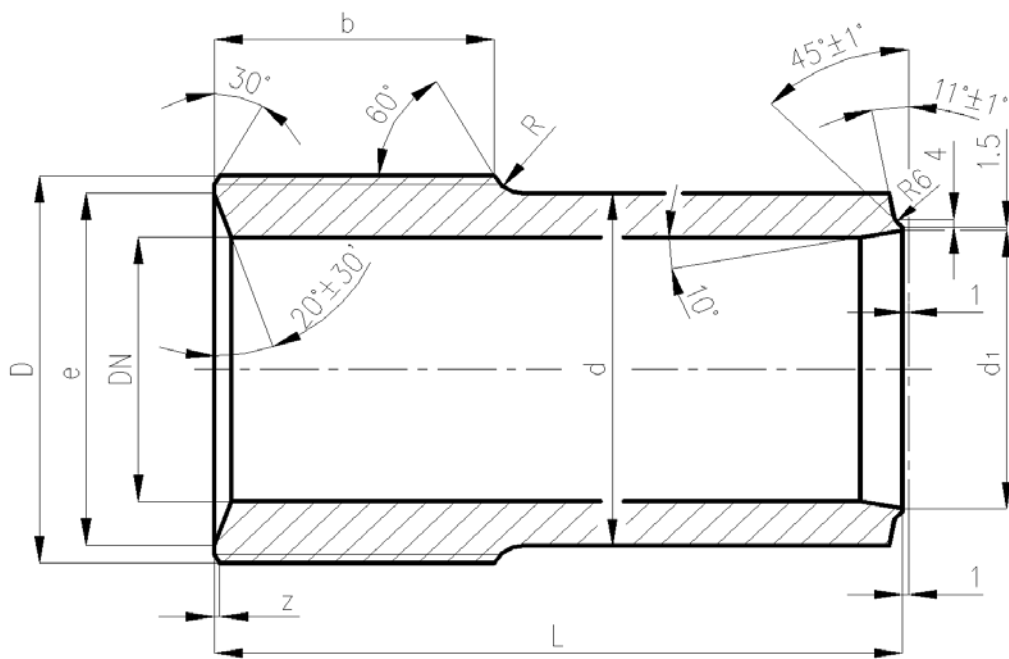
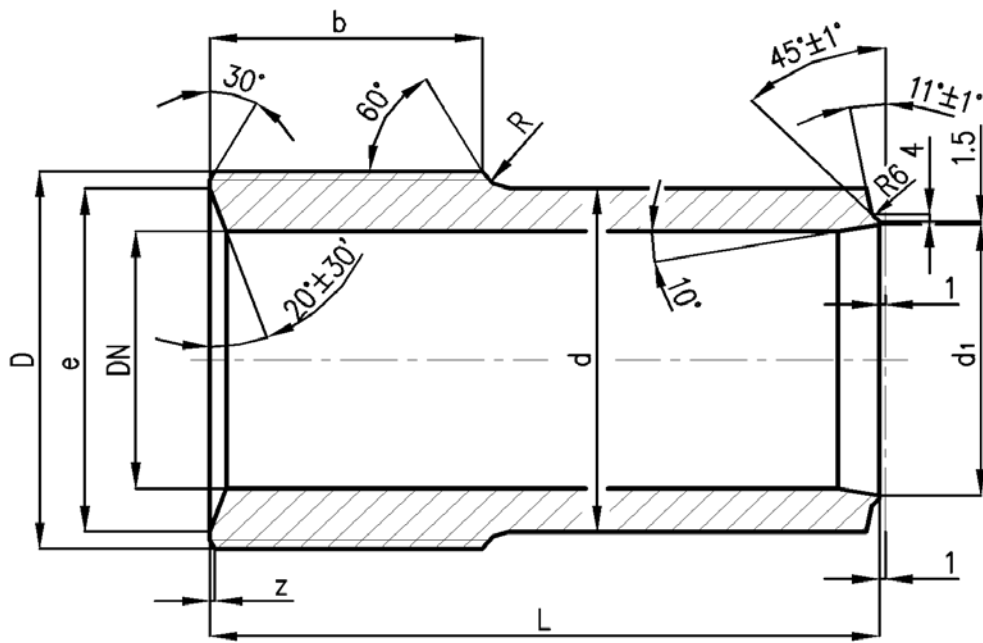







Provedení závitových konců



Norma neplatí pro Jednotku Rafinérie Litvínov a Kralupy.

<p>Nahrazuje :</p> <p>N 16.670</p> <p>z 1/1980</p>	<p>Správce normy :</p> <p>Sekce podpory údržby</p>	<p>Platnost od :</p> <p>01.10.2002</p> <p>(Aktuálnost ověřena 2.2.2022)</p>
--	--	---



DN ₁ / DN ₂ DN ₃	Typ	Rozměry															Číslo výkresu	Materiál	Hmotnost 1ks [kg]	
		DN ₁											DN ₂	DN ₃						
		D	e ₁	d _t	h	h _z	b	z	R	d	d ₁	e ₂	e ₃	L	L ₁	A x B				
70 / 10	TK2a 	-	-	-	-	-	-	-	-	-	105,0	81,0	18	-	400	58	115 x 138	3-CH-3681	12020	25,0
120 / 10	TK2a 	-	-	-	-	-	-	-	-	-	173,5	131,1	18	-	580	92	185 x 202	2-CH-2306		85,2
120 / 10	TK4 	W169x1/6"	152	-	95	105	-	-	5	173,5	131,1	18	-	580	92	185 x 202	2-CH-2307	85,0		
120 / 30	TK4 	W169x1/6"	152	-	95	105	-	-	5	173,5	131,1	43	-	580	93	185 x 208	2-CH-2304	85,0		
★ 250 / 58 , 30	TK4a 	W359x1/4"	298	318	-	-	170	5	30	318,0	268,0	76	43	1270	200	380 x 380	2-CH-2013b	15423	620,0	

★ s krátkou odbočkou a dvěma odběry

Minimální tloušťky stěn přípojek s odběrem: - DN < 250 dle N16.17
- DN250 dle N16.618

Rozlišovací znaky přípojek dle N16.608